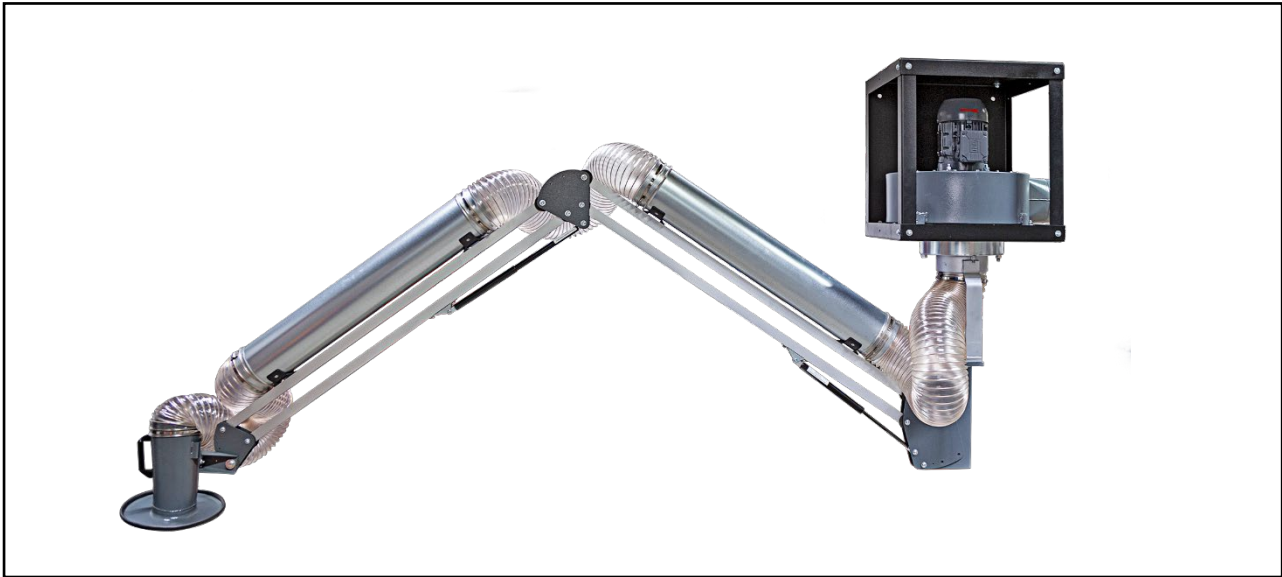


Extraction unit **RG-200** with ball joint extraction arm(01121D)

Mains voltage (V)	400	Max. volume flow (m ³ /h)	2000
Nominal power (kW)	1.1	Max. vacuum (Pa)	1600
Mains frequency (Hz)	50	Connection (mm)	Ø 150
Nominal current (A)	2.4	Dimensions (L x W x H) without extraction arm (mm)	510 x 505 x 540
Sound pressure level LpA (dB(A))	82	Extraction arm (m)	3.0



ESTA PLUS

Area of application

- Extraction of welding fumes, smoke and vapours
- Single and multi-station extraction in industry and trade

The benefits to you at a glance

- High performance
- Robust workmanship
- Low operating costs
- Wide range of applications
- Simple and efficient

Special feature

- Version with ceiling and wall bracket

Options

- Special version with 230V alternating current motor
- Housing and impeller made of stainless steel
- Custom voltages
- Custom painting

State of the art: 01121D-51-03 Subject to technical changes! In case of questions, ESTA experts are willing to help.

ESTA Apparatebau GmbH & Co. KG
Gotenstraße 2 – 6
89250 Senden / GERMANY

Phone +49 7307 804-0
Fax +49 7307 804-500
E-Mail info@esta.com

www.esta.com